

# TABLE OF CONTENTS

<u>Section</u>	<u>Title</u>	<u>Page</u>	<u>Section</u>	<u>Title</u>	<u>Page</u>
<b>1. GENERAL</b>			<b>4. SET-UP ADJUSTMENTS</b>		
1-1.	Location and Function of Controls .....	6	4-1.	Neck Assembly Installation .....	207
1-2.	Installation Diagrams .....	13	4-2.	Display Inclination Adjustment by Main DY .....	207
1-3.	Modifications of Parts .....	20	4-3.	Sub-DY Adjustment .....	207
1-4.	When Installation does not Comply with Standard Measurements .....	31	4-4.	GREEN Lens Focus Adjustment .....	207
1-5.	Notes on Screen .....	36	4-5.	RED Lens Focus Adjustment .....	208
1-6.	Dynamic Picture Setting .....	39	4-6.	BLUE Lens Focus Adjustment .....	208
1-7.	Connecting to the Projector Directly .....	41	4-7.	GREEN 2/4-Pole Adjustment .....	208
1-8.	Connecting when the Projector is Away from Other Equipment .....	44	4-8.	RED 2/4-Pole Adjustment .....	209
1-9.	Connecting More than Four Input Sources .....	46	4-9.	BLUE 2/4-Pole Adjustment .....	209
1-10.	Before Starting Adjustment .....	49	4-10.	GREEN Electric Focus Adjustment .....	209
1-11.	Remote Control Operation .....	50	4-11.	RED Electric Focus Adjustment .....	209
1-12.	Projecting .....	54	4-12.	BLUE Electric Focus Adjustment .....	209
1-13.	Centering Adjustment .....	63	4-13.	Registration Adjustment .....	210
1-14.	Adjustment Displays and Test Patterns .....	65	4-14.	White Balance Adjustment .....	211
1-15.	Adjustment Procedures .....	67	4-15.	Y Board, IC4 (EEPROM) Replacement .....	213
1-16.	Lens Focus Adjustment .....	68	<b>5. SAFETY RELATED ADJUSTMENTS</b> .....		215
1-17.	Registration Adjustment .....	73	<b>6. CIRCUIT ADJUSTMENTS</b>		
1-18.	Fine Adjustment of Each Input signal .....	97	6-1.	BA Board Adjustment .....	219
1-19.	Data Reset .....	103	6-2.	E Board Adjustment .....	221
1-20.	To Activate the Protection on the Remote Commander .....	105	6-3.	DA Board Adjustment .....	221
1-21.	Picture Adjustment .....	106	<b>7. DIAGRAMS</b>		
1-22.	Various Settings .....	107	7-1.	Circuit Boards Location .....	223
1-23.	List of the Messages .....	108	7-2.	Quick Reference .....	224
1-24.	List of Washers Used for Non-standard Installation .....	112	7-3.	Block Diagrams .....	225
1-25.	Projection Distance by Angle of Optical Axis .....	115	7-4.	Schematic Diagrams and Printed Wiring Boards .....	239
<b>2. DISASSEMBLY</b>				Frame Schematic Diagram .....	240
2-1.	Cabinet and Lens Removal .....	117		BA Board .....	245
2-2.	Picture Tube Removal .....	117		BB Board .....	260
2-3.	Power Block Removal (PA, K and NB Boards) .....	118		BC, L and KA Boards .....	270
2-4.	High-Voltage Block Assembly Removal .....	118		CA (B) Board .....	275
2-5.	Interface Unit, BA, BC and BB Boards Removal .....	119		BM and QM Boards .....	280
2-6.	CFA, CFB, CA (RG) and CA (B) Boards Removal .....	120		CA (RG) Board .....	290
2-7.	Y, DA, DB, DM, DD and DE Boards Removal .....	121		CBR, CBG and CBB Boards .....	299
2-8.	M1, M2 and M3A Boards Removal .....	122		CFA, CFB, NA and NB Boards .....	303
2-9.	Attachment Direction of the DC Fan .....	123		DA Board .....	307
<b>3. CIRCUIT DESCRIPTIONS</b>				Y Board .....	319
3-1.	Circuit Operation of BA Board .....	125		DB Board .....	333
3-2.	Circuit Operation of BB Board .....	129		DC Board .....	342
3-3.	Circuit Operation of CA (RG) and CA (B) Boards .....	133		DM Board .....	352
3-4.	Circuit Operation of DA Board .....	140		DD Board .....	359
3-5.	Circuit Operation of DB Board .....	149		DE Board .....	365
3-6.	Circuit Operation of DD Board .....	151		E Board .....	374
3-7.	Circuit Operation of DE Board .....	153		PA, PB and K Boards .....	384
3-8.	Circuit Operation of DC Board .....	157		RC, RCA, RCB, RCC and RCD Boards .....	392
3-9.	Circuit Operation of E Board .....	159		M1, M3A and C1 Boards .....	398
3-10.	Circuit Operation of PA Board .....	173		M2 and C2 Boards .....	404
3-11.	Circuit Operation of K Board .....	182	7-5.	Semiconductors .....	410
3-12.	Circuit Operation of Y Board .....	183	<b>8. EXPLODED VIEWS</b>		
3-13.	Circuit Operation of KA Board .....	197	8-1.	Lens .....	413
3-14.	Circuit Operation of BC Board .....	197	8-2.	ED Block .....	414
3-15.	Circuit Operation of L Board .....	199	8-3.	C Shield Block .....	415
3-16.	Self-diagnostics (Troubleshooting) .....	199	8-4.	Base 1 .....	416
3-17.	SOPS-1036 .....	205		Base 2 .....	417
			8-5.	Power Block .....	418
			<b>9. ELECTRICAL PARTS LIST</b> .....		419

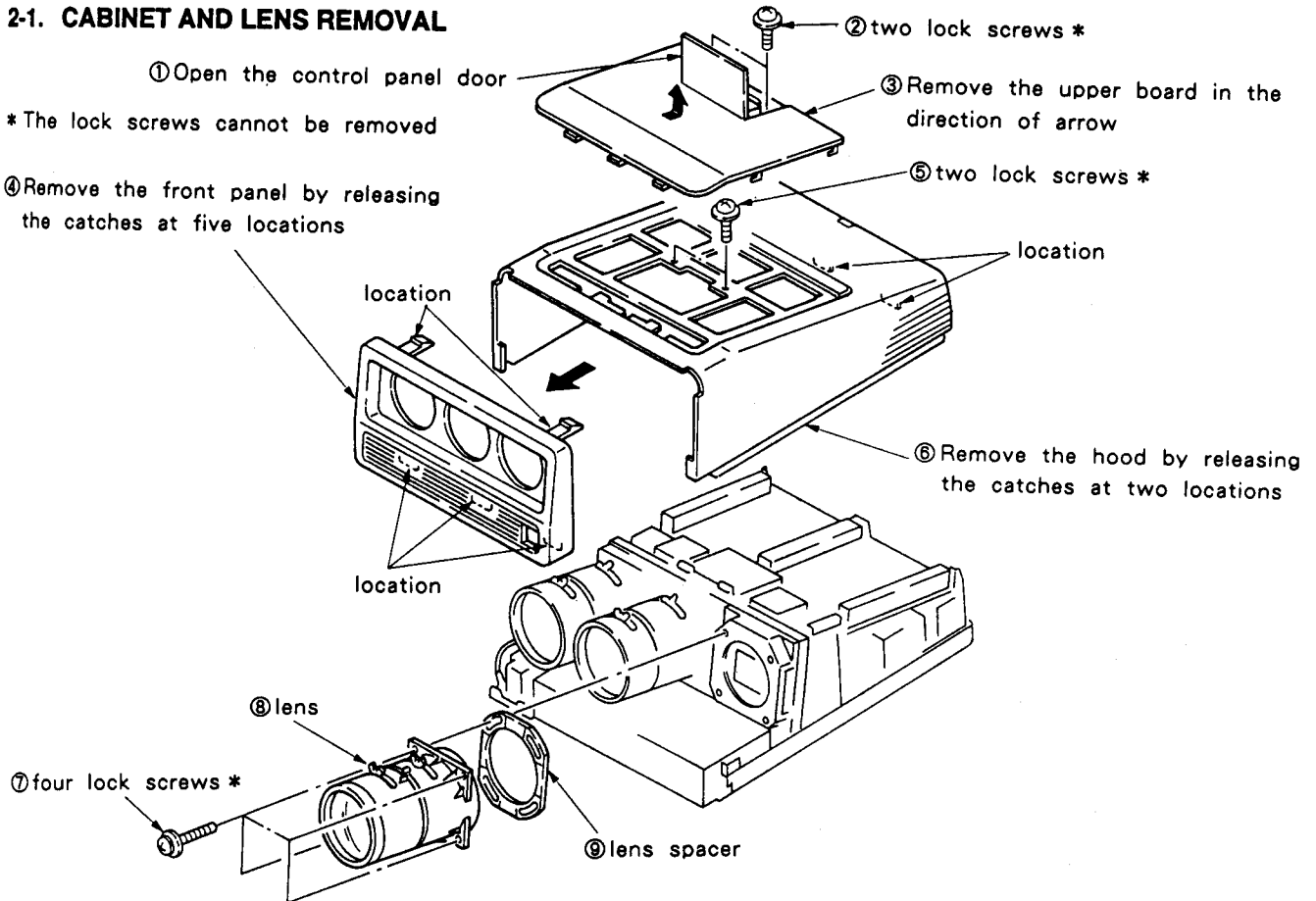
## SECTION 2 DISASSEMBLY

### 2-1. CABINET AND LENS REMOVAL

① Open the control panel door

\* The lock screws cannot be removed

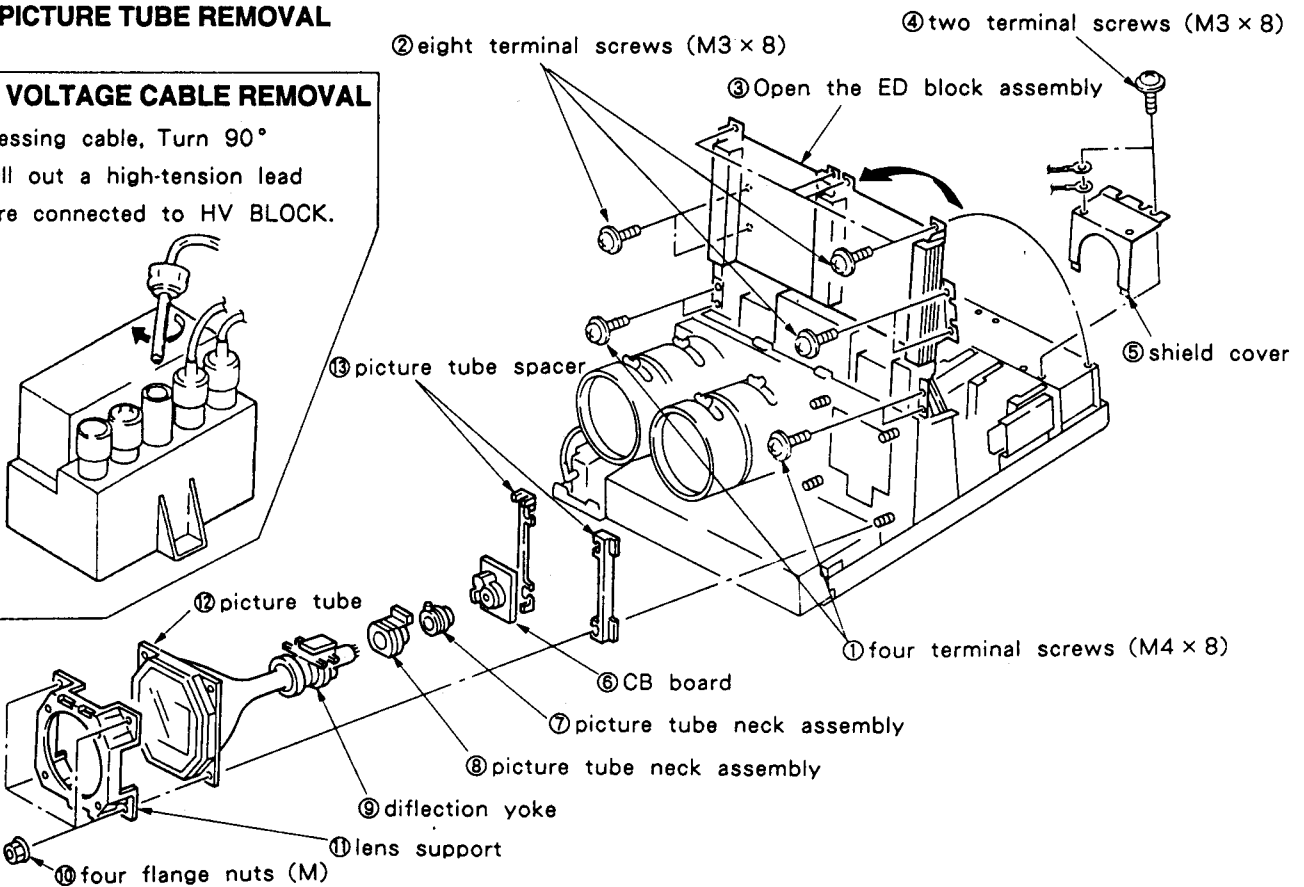
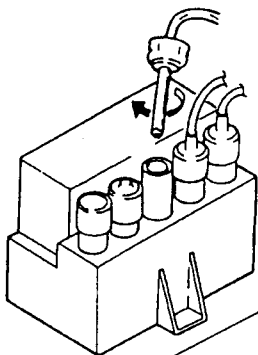
④ Remove the front panel by releasing the catches at five locations



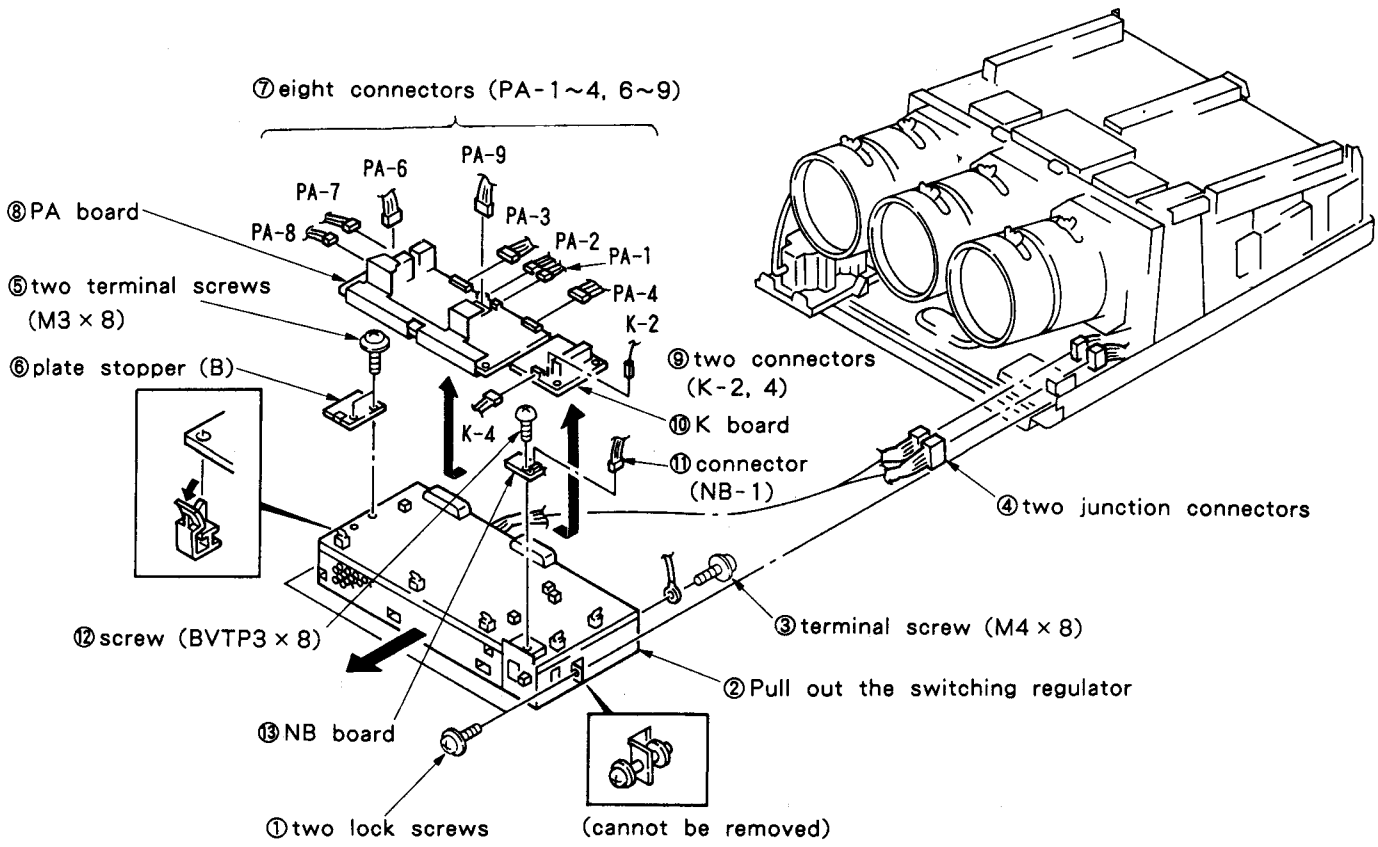
### 2-2. PICTURE TUBE REMOVAL

#### HIGH VOLTAGE CABLE REMOVAL

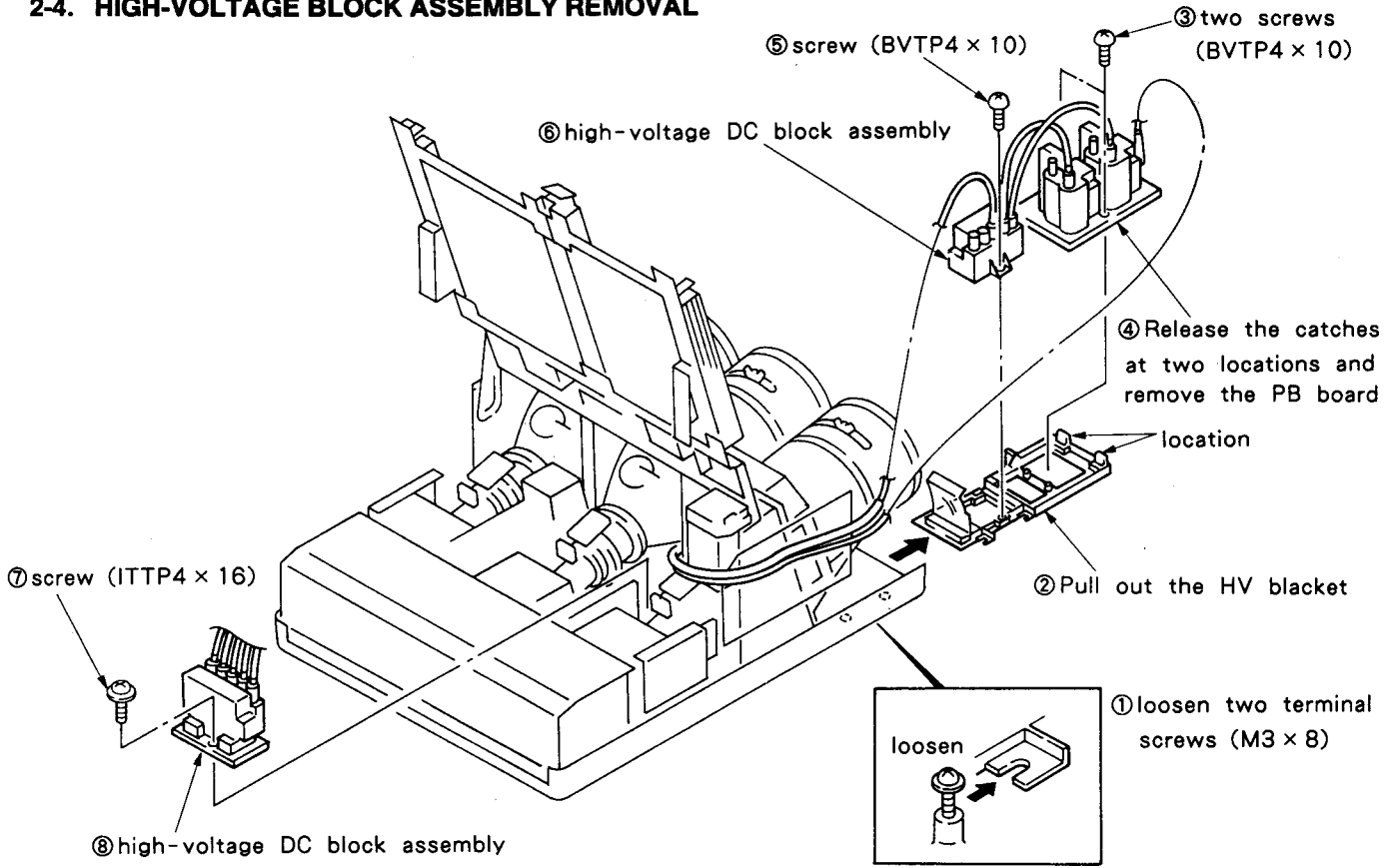
- ① Pressing cable, Turn 90°
- ② Pull out a high-tension lead wire connected to HV BLOCK.



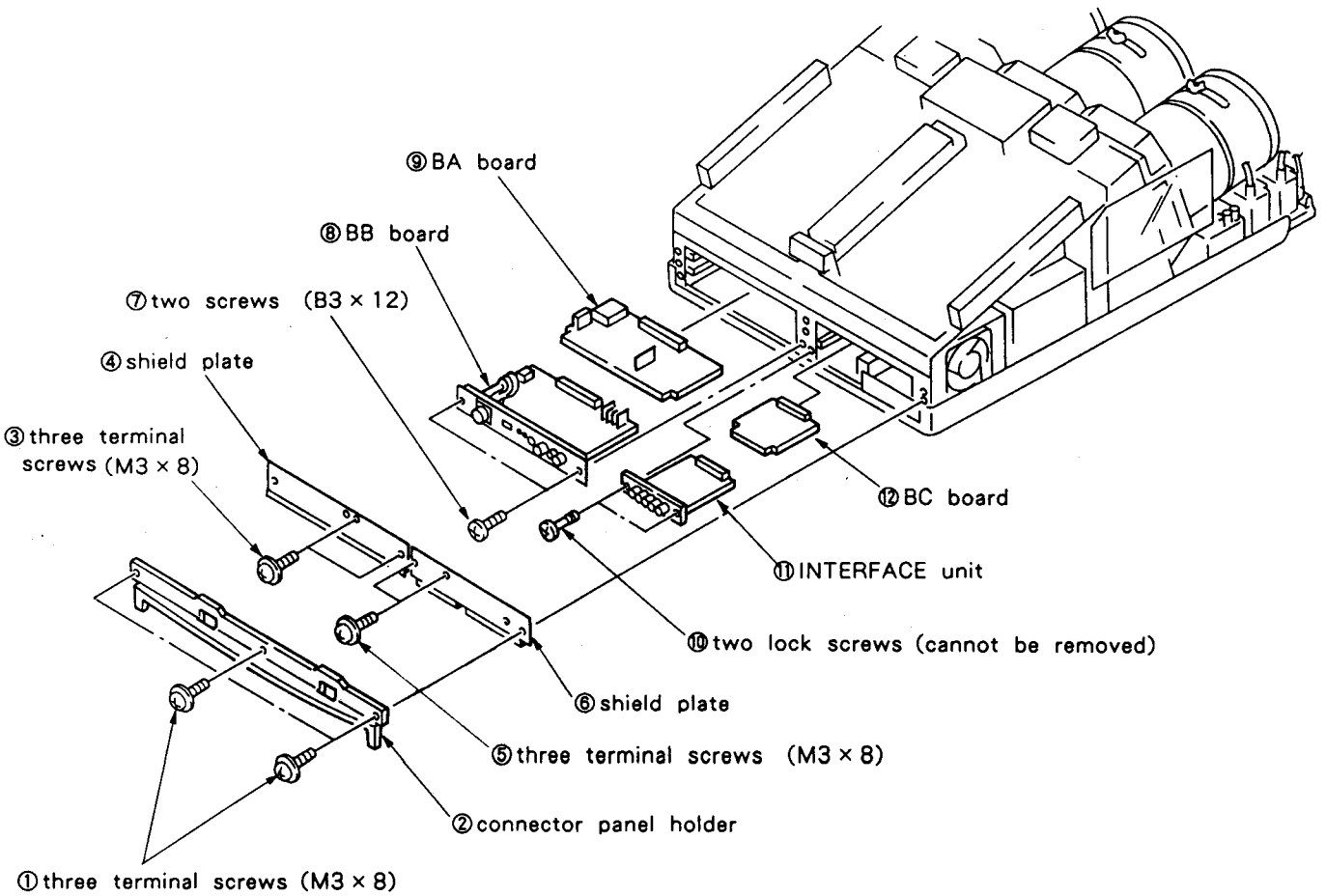
**2-3. POWER BLOCK REMOVAL (PA, K AND NB BOARDS)**



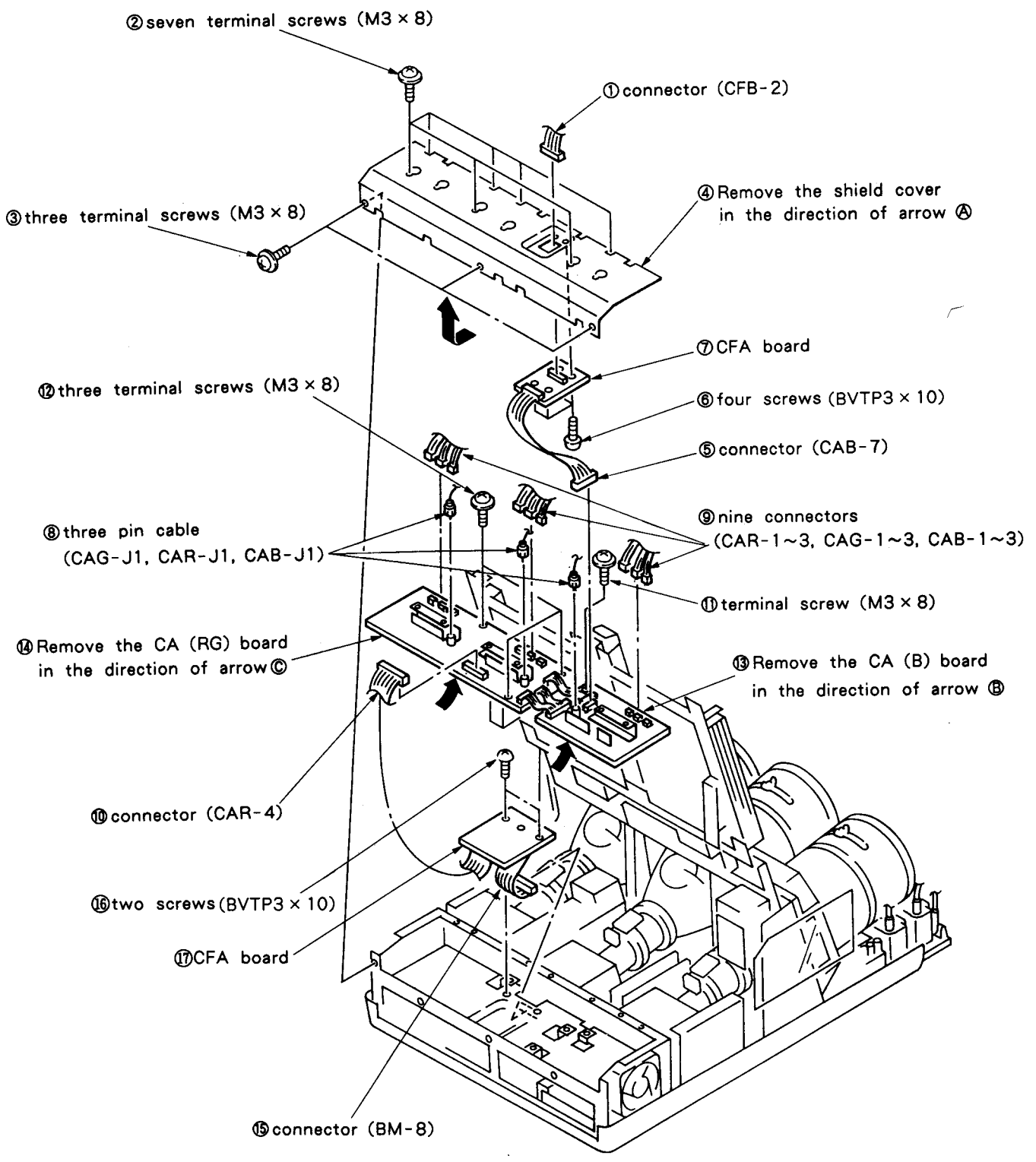
**2-4. HIGH-VOLTAGE BLOCK ASSEMBLY REMOVAL**



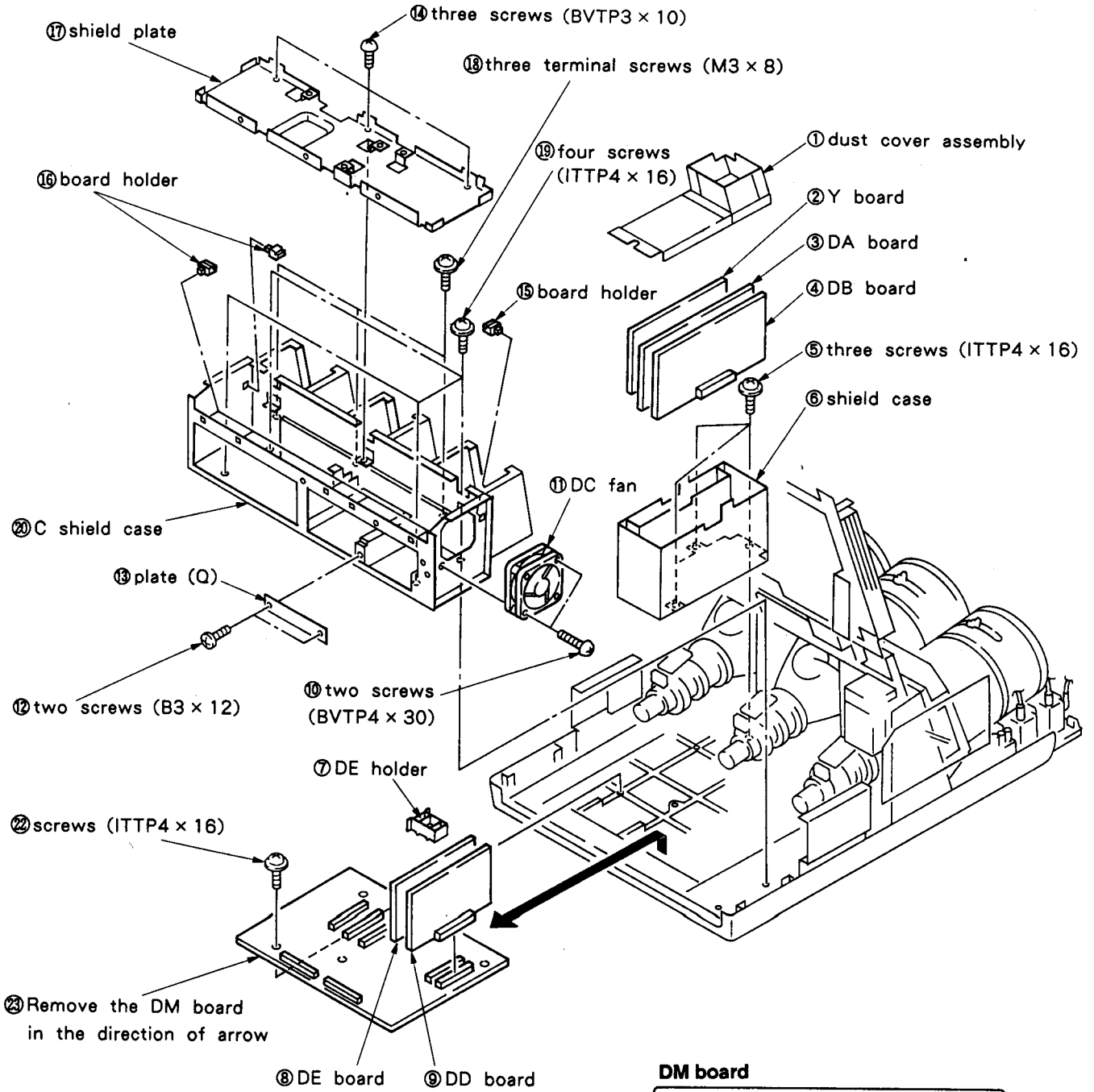
2-5. INTERFACE UNIT, BA, BC AND BB BOARDS REMOVAL



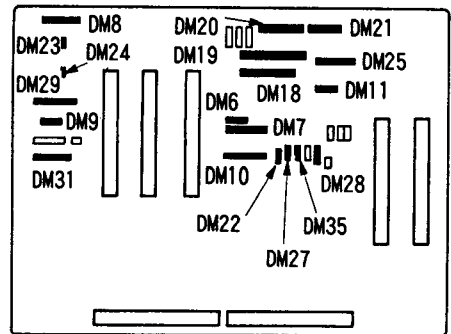
2-6. CFA, CFB, CA(RG) AND CA(B) BOARDS REMOVAL



2-7. Y, DA, DB, DM, DD AND DE BOARDS REMOVAL

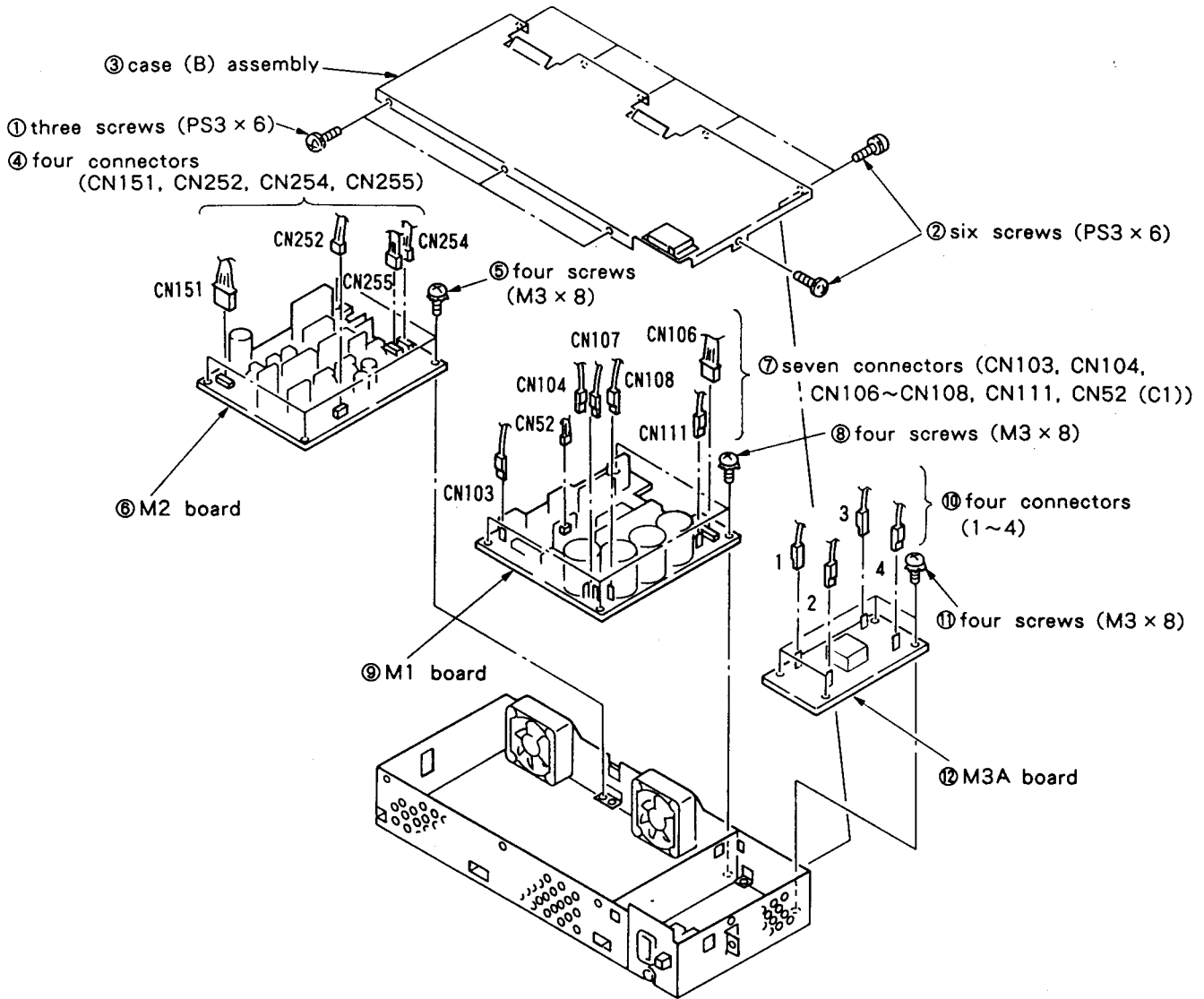


DM board



㉒ nineteen connectors  
 (DM6~11, DM18~25, DM27~29, DM31, 35)

**2-8. M1, M2 AND M3A BOARDS REMOVAL**



2-9. ATTACHMENT DIRECTION OF THE DC FAN

