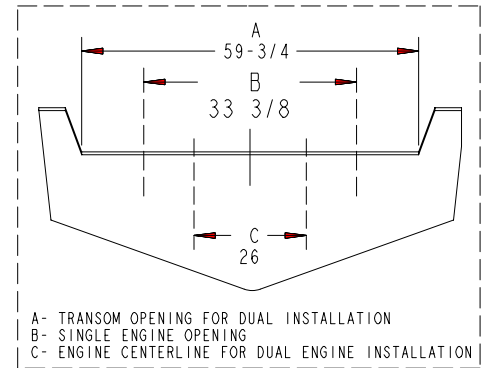


LET	REVISIONS	BY	DATE	ECN
-	DRAWING RELEASE	WAL	03-02-01	0545-01
A	33 3/8 WAS 31 7/8, 33 15/16 WAS 31 5/8	WAL	02-06-02	0721-02

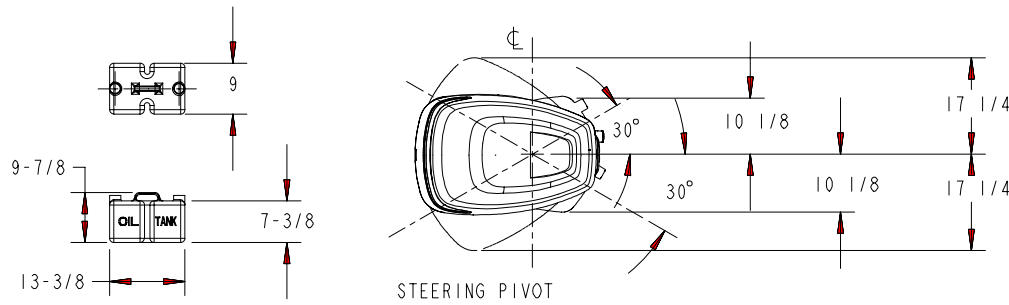
MODELS: OPTIMAX 200 - 225 HP AND  
225 DBW 2003 AND NEWER

	LONG SHAFT 20"	X-LONG SHAFT 25"	XX-LONG SHAFT 30"
A	20 1/4	25 1/4	30 1/4
B	39 3/4	44 1/8	48 1/2



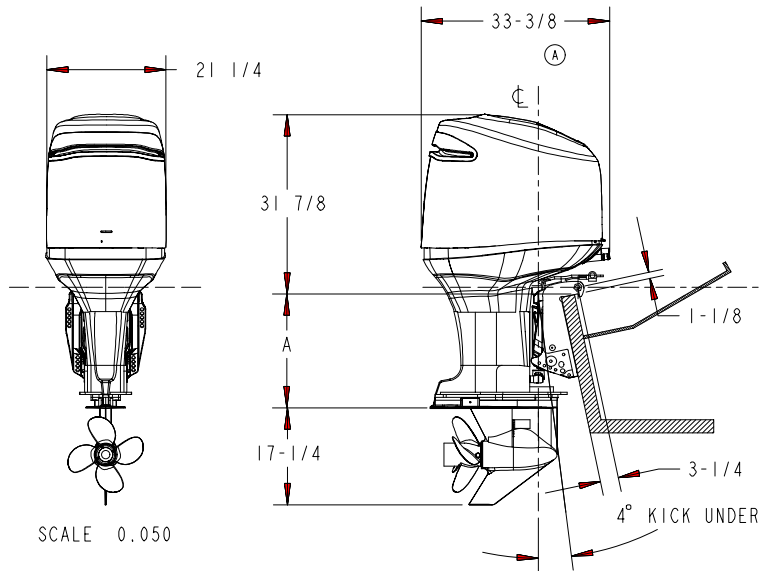
A- TRANSOM OPENING FOR DUAL INSTALLATION  
B- SINGLE ENGINE OPENING  
C- ENGINE CENTERLINE FOR DUAL ENGINE INSTALLATION

MATERIAL		
FINISH		
REF SPECS		
THE INFORMATION CONTAINED IN THIS DOCUMENT IS TO BE TREATED AS TRADE SECRET AND CONFIDENTIAL TO MERCURY		
<b>UNLESS OTHERWISE SPECIFIED</b>		
THIRD ANGLE PROJ	2 PL DEC ±	DIMENSIONS ARE AFTER PLATING BREAK ALL SHARP EDGES
SCALE: 0.050	3 PL DEC ±	CHAM. TAPPED HOLES 90° X THD DIA
DO NOT SCALE	ANGLES ±	MACHINED SURFACES 1/32
		THREAD LENGTH = FULL THREADS
MANUF CAST	MATL ENG	
-	-	
MANUF WACH / ASSY	PURCH	
-	-	
QC	PRODUCT LINE	TITLE
-	-	<b>INSTALLATION DRAWING 3.0L DFI</b>
APPROVED	DATE	PART NUMBER
WAL	12-6-2000	<b>90-815258-20</b>
CHECKED	DESIGNED	SHEETS
WAL	SLK	<b>1 of 1</b>



ONBOARD OIL TANK

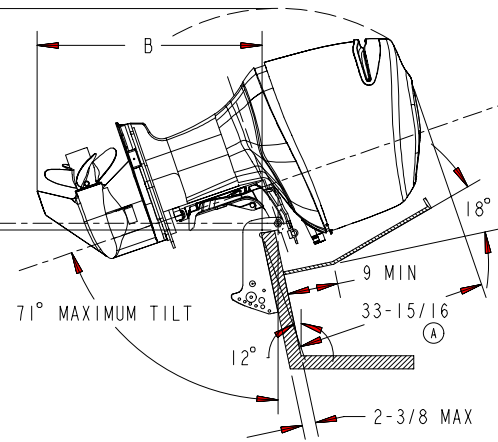
STEERING PIVOT



SCALE 0.050

\*FROM TOP OF TRANSOM TO TOP OF ENGINE WHEN TILTED UP.

TILT POSITION IS BASED ON A 12° TRANSOM ANGLE.  
A TRANSOM WITH AN ANGLE GREATER THAN 12°  
WILL REDUCE THE MAXIMUM TILT ANGLE AND  
INCREASE KICK UNDER ANGLE.



MOTOR WELL; SEE  
ABYC-S-12 STANDARD  
FOR OTHER  
DIMENSIONS

0 1 2 3 4

FORMAT B SIZE